

kronback tracers	Status:	Version:
	FINAL	1.1
Titel : Configuration and Operation manual, kronback tracers X16		18/09/2018

Configuration and Operation manual



Kronback tracers X16

	Kronback ApS Lautrupvang 15 DK-2750 Ballerup Denmark Web: www.kronback.com Fax: (+45) 46 907 910		Page 1 of 57
--	---	--	--------------

kronback tracers	Status:	Version:
	FINAL	1.1
Titel : Configuration and Operation manual, kronback tracers X16		18/09/2018

CONTENT

1. PHYSICAL CONNECTIONS	6
1.1. Input connector and LED	7
1.2. OUTPUT CONNECTOR, SIGNAL GENERATOR	8
1.2.1. Signal types	8
1.3. OUTPUT CONNECTOR, RF SWITCH	9
1.4. Network Connector	10
1.4.1. LED indicators	10
1.4.2. Setting the IP parameters	11
1.5. SFP Connector	14
1.5.1. Supported SFP modules	14
1.5.2. Enabling the SFP module	14
1.5.3. Setting the IP parameters	14
1.1. Power Inlet	15
1.1.1. Fuse	15
1.1.2. Power connector	15
1.1.3. Mating connector	15
1.1. LCD display	19
1.1.1. Menu tree structure	20
1.1.2. About	20
1.1.3. Livetrace	21
1.1.4. Spectrum	22
1.1.5. RF switch	24
1.1.6. Config	25
2. SPECIFICATIONS	26
2.1. RF specifications	26
2.1.1. Input 1 – 16	26
2.1.2. OUTPUTS - GENERATOR AND SWITCH	26
2.2. Connectors	26
2.3. Indicators	26
2.4. Physical Specifications	26
2.5. Electrical	27
2.6. Environmental	27

	Kronback ApS Lautrupvang 15 DK-2750 Ballerup Denmark Web: www.kronback.com Fax:(+45) 46 907 910		Page 2 of 57
--	--	--	--------------

kronback tracers	Status:	Version:
	FINAL	1.1
Titel : Configuration and Operation manual, kronback tracers X16		18/09/2018

2.7. Network	27
2.8. Management	27
3. USER INTERFACE	28
3.1. CHANNEL SELECTION	28
3.1.1. Channel selection toggle button:	28
3.1.2. Text search	28
3.2. LIVE TRACE	29
3.2.1. Channel selection field	29
3.2.2. Sort	29
3.2.3. Sensitivity	30
3.2.4. Min / Max fields	30
3.2.5. Trace	30
3.2.6. Ref line	30
3.2.7. Peak	31
3.2.8. Average	31
3.2.9. Display line	31
3.2.10. Units	31
3.2.11. Cookie	31
3.2.12. Overload	32
3.3. TIME LINE	33
3.3.1. Timeline Controls	34
3.3.2. Counting the pulses.	35
3.4. LATEST LOG	37
3.4.1. LATEST LOG graph	37
3.4.2.	37
3.4.3. Consolidation	38
3.4.4. Color Coding	39
3.5. HISTORY LOG	40
3.5.1. 24 hours storage	40
3.5.2. Color coding	40
3.5.3. Log storage	41
3.5.4. Log capacity	41
3.6. RASTER	42
3.6.1. aster parameters	42
3.7. QUALITY	43
3.7.1. Quality BOX PLOT view	44

kronback tracers	Status:	Version:
	FINAL	1.1
Titel : Configuration and Operation manual, kronback tracers X16		18/09/2018

4. SETUP	45
4.1. S16 Setup	45
4.1.1. Switch topology	45
4.1.2. Input steps	45
4.1.3. IP address	46
4.1.4. Port	46
4.1.5. Delay	46
4.1.6. Insertion loss compensation	46
4.1.7. State check	46
4.2. Network Setup	47
4.2.1. Dynamic or static IP address.	47
4.2.2. SNMP Enable	48
4.2.3. Enable (eth0)	48
4.2.4. DHCP (eth0)	48
4.2.5. IP address, Default gateway and Subnet Mask (eth0)	48
4.2.6. Enable (sfp0)	48
4.2.7. IP address, Default gateway and Subnet Mask (sfp)	48
4.2.8. Packet filter	48
4.3. Date & Time	49
4.3.1. Use Daylight Saving Time	49
4.3.2. Enable	49
4.3.3. SNTP Server	49
4.3.4. Local Time zone	49
4.3.5. Update	49
4.4. Security setup	50
4.4.1. SETUP MENU	50
4.4.2. MAIN SITE	50
4.4.3. LOST Password	50
4.5. Channel	51
4.5.1. Channel Key	51
4.5.2. Name / Node	51
4.5.3. Description	51
4.5.4. Frq. Min	52
4.5.5. Frq. Max	52
4.5.6. Max dBuV	52
4.5.7. Ref. level dBuV	52
4.5.8. Input	52
4.5.9. Enable Logging	52
4.5.10. In use	52
4.5.11. Modem Detection	52
4.6. System	53
4.7. Slaves	54

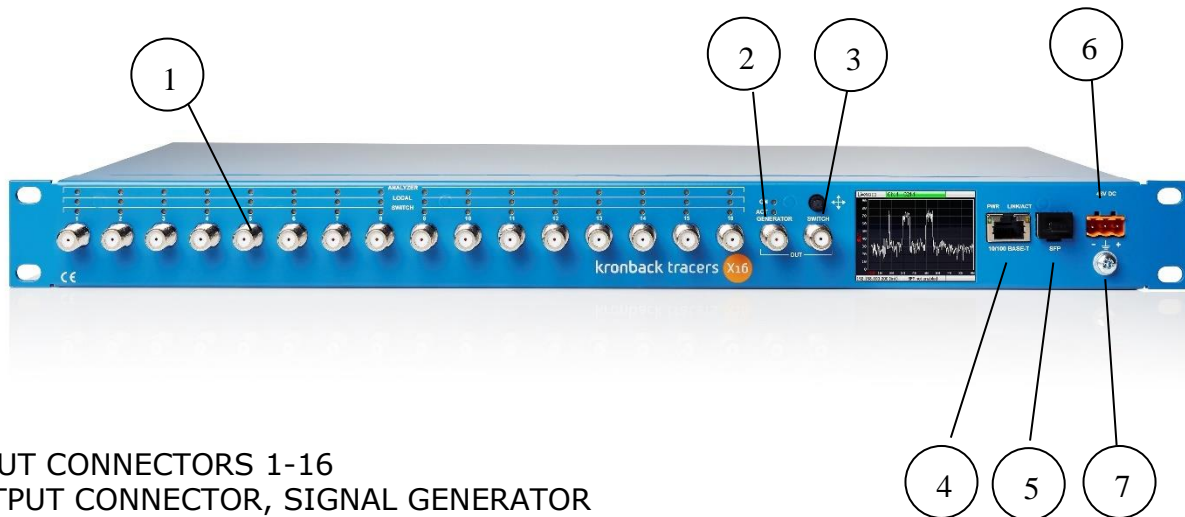
	Kronback ApS Lautrupvang 15 DK-2750 Ballerup Denmark Web: www.kronback.com Fax:(+45) 46 907 910		Page 4 of 57
--	--	--	--------------

kronback tracers	Status:	Version:
	FINAL	1.1
Titel : Configuration and Operation manual, kronback tracers X16		18/09/2018

4.8. SYSLOG	55
4.9. Software Update	56

kronback tracers	Status:	Version:
	FINAL	1.1
Titel : Configuration and Operation manual, kronback tracers X16		18/09/2018

1. Physical connections



- 1 INPUT CONNECTORS 1-16
- 2 OUTPUT CONNECTOR, SIGNAL GENERATOR
- 3 OUTPUT CONNECTOR, RF SWITCH
- 4 10/100 NETWORK CONNECTOR
- 5 SFP GbE STREAMING OUTPUT
- 6 48V DC CONNECTOR
- 7 GROUND TERMINAL

	Kronback ApS Lautrupvang 15 DK-2750 Ballerup Denmark Web: www.kronback.com Fax: (+45) 46 907 910		Page 6 of 57
--	---	--	--------------

kronback tracers	Status:	Version:
	FINAL	1.1
Titel : Configuration and Operation manual, kronback tracers X16		18/09/2018

1.1. Input connector and LED



The 16 F-type inputs connectors are mechanically fixed in the chassis front by a double D-cut hole.

The connectors can withstand torques > 4,5 Nm (40 lb*inch)

Maximum input level within the **X16** is 110dBuV.

Over each connector are three red LED that indicates the activity of each input. Each input can have 3 activities.

The **ANALYZER** LED is used to indicate that the input is being used for an internal measurement, such as LIVETRACE or quality monitoring.

The **LOCAL** LED is active if the input is being displayed on the LCD display.

The **SWITCH** LED is active if the input is switched to the RF SWITCH OUT connector

All input connectors are DC blocked up to 100V

All F-connectors are high quality CABLECON type.

	Kronback ApS Lautrupvang 15 DK-2750 Ballerup Denmark Web: www.kronback.com Fax: (+45) 46 907 910		Page 7 of 57
--	---	--	--------------

kronback tracers	Status:	Version:
	FINAL	1.1
Titel : Configuration and Operation manual, kronback tracers X16		18/09/2018

1.2. OUTPUT CONNECTOR, SIGNAL GENERATOR



The GENERATOR output connector sends out a signal from the internal DAC circuit of the X16. The maximum level is 110 dBuV. A number of different types of signals can be generated by the X16.

1.2.1. Signal types

Various signal types can be generated:

Signal type	Frequency	Max Level		Used for
Single CW	3-1200 MHz	110 dBuV		Sweep
Dual CW	3-1200 MHz	100 dBuV		Network alignment
FSK	3-900 MHz	110 dBuV	Baud 9.6kHz to 38.4 kHz	P4i communication and HMS
GFSK	3-900 MHz	110 dBuV	50KHz	Proprietary HFC transponder communication

Note. The DAC inside X16 is a direct-DAC type covering the full CATV spectrum up to 1200 MHz, and other types of signals could be generated on request.


The levels in the above table are maximum levels. An internal step attenuator can attenuate the signal up to 30dB in 0.5 dB steps. Furthermore, the DSP unit inside the X16 can also attenuate the signal further xx dB. It is necessary to attenuate using the DSP in the case that the dual CW needs to be tilted, or if 30 dB attenuation is not sufficient.

Over each connector are two red LED that indicates the activity of each input. Each input can have 3 activities.

The **ON** LED is used to indicate that the internal DAC circuitry is enabled and ready to transmit

The **ACT** LED is active and that a signal is present on the output.

	Kronback ApS Lautrupvang 15 DK-2750 Ballerup Denmark Web: www.kronback.com Fax: (+45) 46 907 910		Page 8 of 57
--	---	--	--------------

	Status:	Version:
	FINAL	1.1
Titel : Configuration and Operation manual, kronback tracers X16		18/09/2018

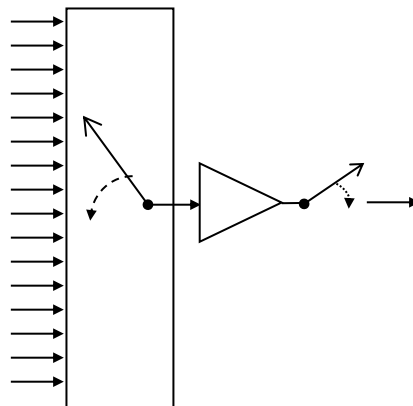
1.3. OUTPUT CONNECTOR, RF SWITCH



The RF SWITCH output connector transmits one of the input 1 to 16 signals.

Since the internal switch is a SP16T type, only 1 input can be selected at a time. The switch does not function as a switchable multi-combiner.

An ALL-OFF mode disconnects all inputs and ensures that none of the 16 inputs are transmitted.



To ensure unity gain between each inputs and the output, an internal wideband amplifier is buffering the signals. The frequency range of the switch is 3 to 1200 MHz.

The input that should be switched can be selected from the local LCD display using the joystick. The switch can also be remote controlled from the web interface of the **X16**, or by a proprietary protocol via a TCP/IP socket connection.

The socket protocol used for remote control is similar to the one used by the Kronback Tracers **S16** RF switch product.

There are no LED associated with the switch output, but one of the 16 **SWITCH** LED's will light if an input is connected. If no LED is lighting then the switch is in ALL-OFF mode.

	Kronback ApS Lautrupvang 15 DK-2750 Ballerup Denmark Web: www.kronback.com Fax:(+45) 46 907 910		Page 9 of 57
--	--	--	--------------

kronback tracers	Status:	Version:
	FINAL	1.1
Titel : Configuration and Operation manual, kronback tracers X16		18/09/2018

1.4. Network Connector



There are two network connectors at the front of the X16. One 10/100 BASE-T and one slot for a SFP module.

The 10/100 BASE-T is used for remote management and WEB access of the X16. The SFP module is dedicated for data streaming of RTP-DVB private data.

The RJ45 Network connector is supporting 10 or 100 Mbit/s link speed, and half or full duplex.

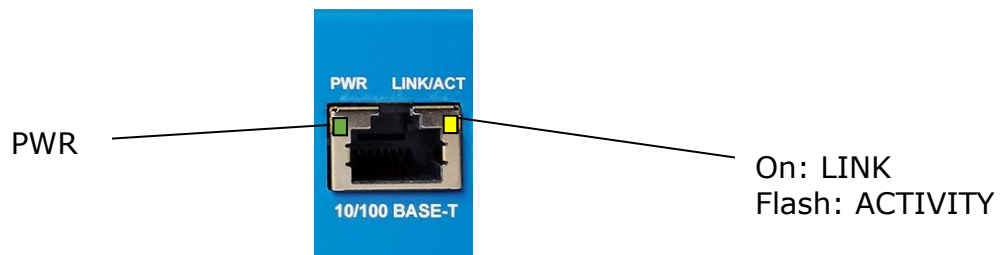
MDIX is supported for both straight and crossed twisted-pair cables

1.4.1. LED indicators

The top left LED (green) indicates that the X16 is powered on.

The top right LED (orange) when lighting indicates that Link to the X16 is established.

The top right LED (orange) when flashing indicates that data is transmitted or received.



	Kronback ApS Lautrupvang 15 DK-2750 Ballerup Denmark Web: www.kronback.com Fax: (+45) 46 907 910		Page 10 of 57
--	---	--	---------------

kronback tracers	Status:	Version:
	FINAL	1.1
Titel : Configuration and Operation manual, kronback tracers X16		18/09/2018

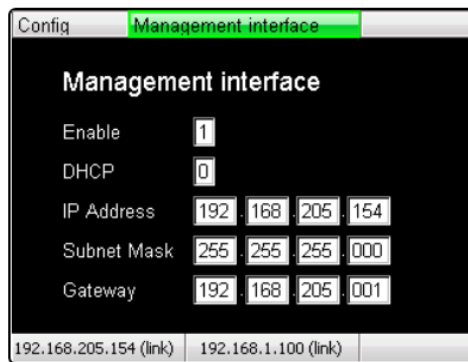
1.4.2. Setting the IP parameters

There are two ways to setup the IP parameters of the X16 10/100 BASE-T management port. Either by using the LCD display or from the WEB user interface.

1.4.2.1. IP setup using the LCD display.

The IP address can be setup with the LCD display and its associated joystick

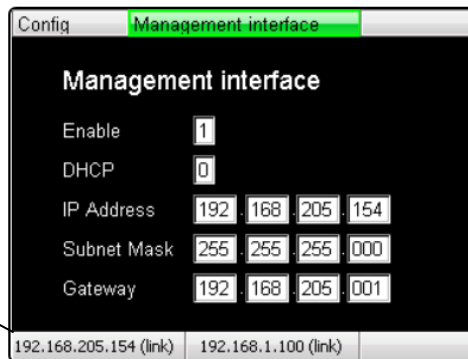
Navigate to the CONFIG→Management Interface menu.



Parameters to be set are:


- Enable
- DHCP on/off
- IP-ADDRESS
- SUBNET MASK
- GATEWAY

IP ADDRESS and LINK status for 10/100 BASE-T



After setting up the parameters the X16 must be rebooted. This is done from the main menu of the LCD display.

	Kronback ApS Lautrupvang 15 DK-2750 Ballerup Denmark Web: www.kronback.com Fax: (+45) 46 907 910		Page 11 of 57
--	---	--	---------------

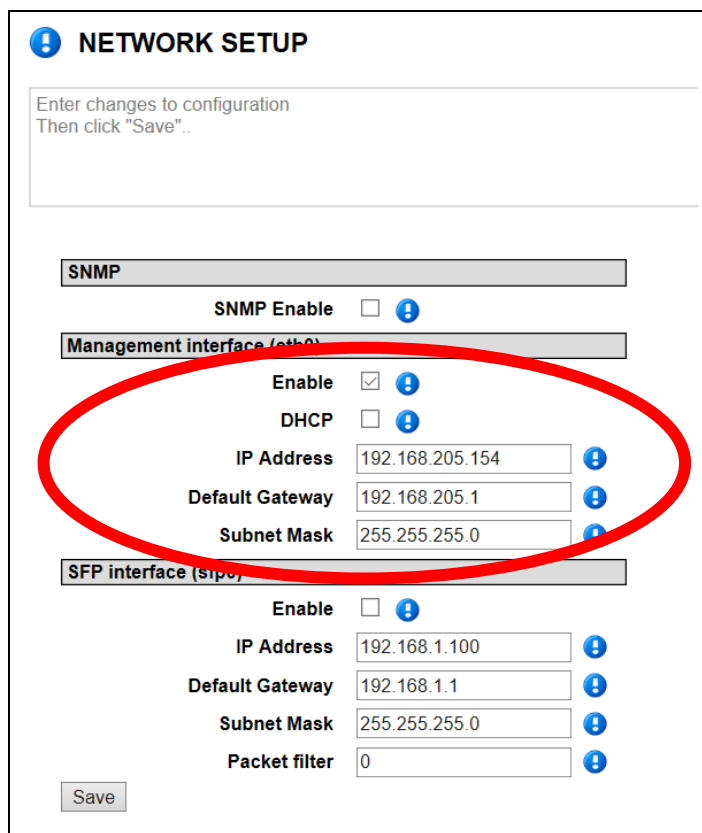
	Status:	Version:
	FINAL	1.1
Titel : Configuration and Operation manual, kronback tracers X16		18/09/2018

The actual IP address and LINK status are always present in the bottom of the LCD display.

1.4.2.1. IP setup using the WEB user interface.

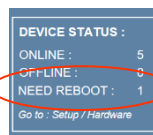
The IP address can be set from the WEB user interface

Navigate to the SETUP→NETWORK→10/100 BASE-T menu.



After the parameters has been entered, click the SAVE button.

The Device status window reports that the X16 needs to be rebooted:



To reboot the X16 go to the SETUP→HARDWARE menu and click Reboot

	Kronback ApS Lautrupvang 15 DK-2750 Ballerup Denmark Web: www.kronback.com Fax:(+45) 46 907 910		Page 12 of 57
--	--	--	---------------

kronback tracers	Status:	Version:
	FINAL	1.1
Titel : Configuration and Operation manual, kronback tracers X16		18/09/2018

<< SETUP

Synchronize System Reboot System (!)

DEVICE	STATUS	ACTION	UPTIME	S
X16	Online	Reboot (!)	18 day(s) 01:37:43	2

After the reboot has been performed, the X16 report OK in the system status.



Note. Since the IP address is changed, the browser window has to be reassigned with the new IP address before the system status can be verified.

kronback tracers	Status:	Version:
	FINAL	1.1
Titel : Configuration and Operation manual, kronback tracers X16		18/09/2018

1.5. SFP Connector



There are two network connectors at the front of the X16. One 10/100 BASE-T and one slot for a SFP module.

The 10/100 BASE-T is used for remote management and WEB access of the X16. The SFP module is dedicated for data streaming of RTP-DVB private data.

1.5.1. Supported SFP modules

Both electrical and optical SFP modules are supported for GbE connectivity.

1.5.2. Enabling the SFP module

Before use the SFP module needs to be enabled. This can be done from the LED display or from the WEB user interface. In both cases, navigate to the same menu as for the IP settings.

1.5.3. Setting the IP parameters

There are two ways to setup the IP parameters of the SFP module. Either by using the LCD display or from the WEB user interface.

	Kronback ApS Lautrupvang 15 DK-2750 Ballerup Denmark Web: www.kronback.com Fax:(+45) 46 907 910		Page 14 of 57
--	--	--	---------------

kronback tracers	Status:	Version:
	FINAL	1.1
Titel : Configuration and Operation manual, kronback tracers X16		18/09/2018

1.1. Power Inlet



The **X16** accepts a nominal 48V DC power source from 36V to 75V.

The + and – poles of the connector are galvanic isolated from the internal of the X16.

The center pole of the connector and the ground termination screw are connected to the and the chassis ground of the X16.



Note Proper grounding is critical to avoid hazard and to avoid damaging equipment due to voltage differences.

1.1.1. Fuse

The X16 is equipped with an internal auto Fuse of 0,6A

1.1.2. Power connector

The Power connector is a Weidmüller type 1510460000, PCB plug-in Male connector, Pitch: 5.08 mm, No. of poles: 3

1.1.3. Mating connector

A suggested mating connector is: Weidmüller 1707700000 - Pluggable Terminal Block, 5.08 mm, 3 Ways, 2.5 mm², Clamp.

It can be purchased at www.farnell.com, item number 1866608

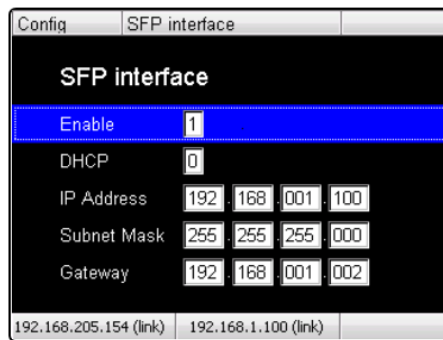
	Kronback ApS Lautrupvang 15 DK-2750 Ballerup Denmark Web: www.kronback.com Fax:(+45) 46 907 910		Page 15 of 57
--	--	--	---------------

kronback tracers	Status:	Version:
	FINAL	1.1
Titel : Configuration and Operation manual, kronback tracers X16		18/09/2018

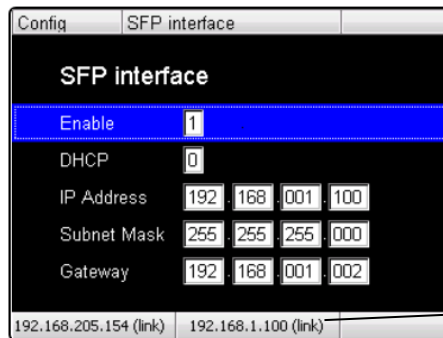
1.1.3.1. IP setup using the LCD display.

The IP address can be setup with the LCD display and its associated joystick

Navigate to the CONFIG→ETHERNET→SFP menu.



Parameters to be set are:
 ENABLE on/off
 DHCP on/off
 IP-ADDRESS
 SUBNET MASK
 GATEWAY



IP ADDRESS and LINK status for the SFP module

After setting up the parameters the X16 must be rebooted. Rebooting is done from the main menu of the LCD display.

The actual IP address and LINK status are always present in the bottom of the LCD display.

kronback tracers	Status:	Version:
	FINAL	1.1
Titel : Configuration and Operation manual, kronback tracers X16		18/09/2018

1.1.3.2. IP setup using the WEB user interface.

The IP address can be set from the WEB user interface

Navigate to the SETUP→SFP menu.

NETWORK SETUP

Enter changes to configuration
Then click "Save"..

SNMP

SNMP Enable

Management interface (eth0)

Enable

DHCP

IP Address 192.168.205.154

Default Gateway 192.168.205.1

Subnet Mask 255.255.255.0

SFP interface (sfp0)

Enable

IP Address 192.168.1.100

Default Gateway 192.168.1.2

Subnet Mask 255.255.255.0

Packet filter 0

Save

Enable

When selected the enable field activates all the hardware inside the X16 that involves the SDP module.

Packet Filter Mode


The SFP interface has a filtering function to ensure that inbound network traffic can be blocked.

The filter only accepts ARP and ICMP (ping) traffic.

Outbound traffic, such as DVB RTP streaming is always allowed.

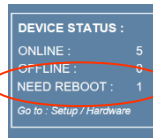
This ensures that the X16 can always transmit its DVB RTP data to an EDGE QAM without being disturbed by inbound broadcast traffic.

	Kronback ApS Lautrupvang 15 DK-2750 Ballerup Denmark Web: www.kronback.com Fax: (+45) 46 907 910		Page 17 of 57
--	---	--	---------------

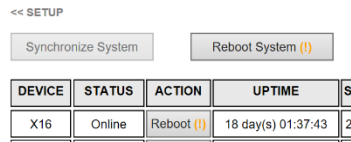
	Status:	Version:
	FINAL	1.1
Titel : Configuration and Operation manual, kronback tracers X16		18/09/2018

Note. The IP address of the SFP module must be in a different IP subnet from the 10/100 BASE-T management interface.

After the parameters has been entered, click the SAVE button.
The Device status window reports that the X16 needs to be rebooted:



To reboot the X16 go to the SETUP→HARDWARE menu and click Reboot



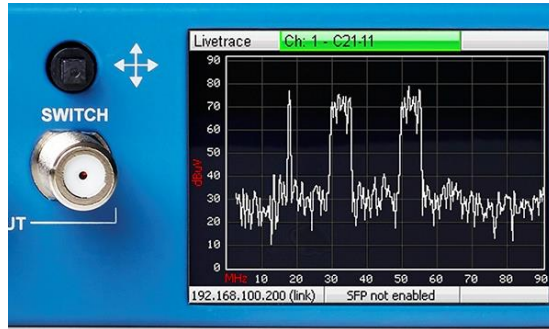
After the reboot has been performed, the X16 report OK in the system status.



Note. Since the IP address is changed, the browser window has to be reassigned with the new IP address before the system status can be verified.

kronback tracers	Status:	Version:
	FINAL	1.1
Titel : Configuration and Operation manual, kronback tracers X16		18/09/2018

1.1. LCD display



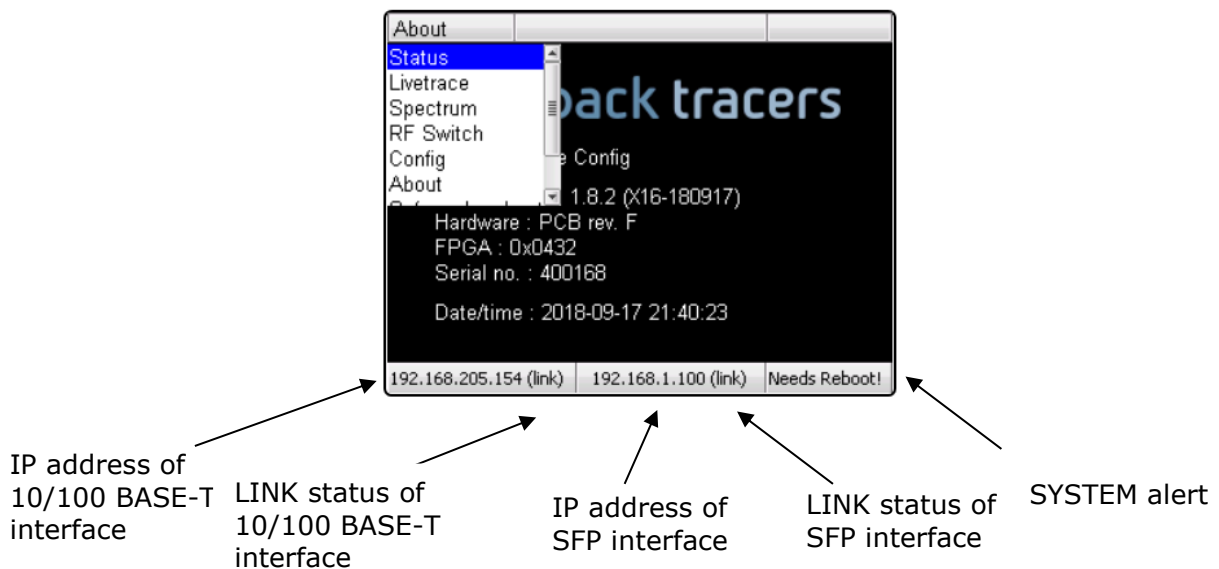
The LCD display and its associated joystick is used for configuration and monitoring.

The joystick is used to

- navigate through the menus
- set values.

With the joystick 5 selections can be made: UP, DOWN, LEFT, RIGHT and PUSH.

From the starting point in the top left part of the screen a fold out menu will appear when selecting the DOWN key.



Selecting a sub menu is done by pushing the joystick or selecting the RIGHT key.

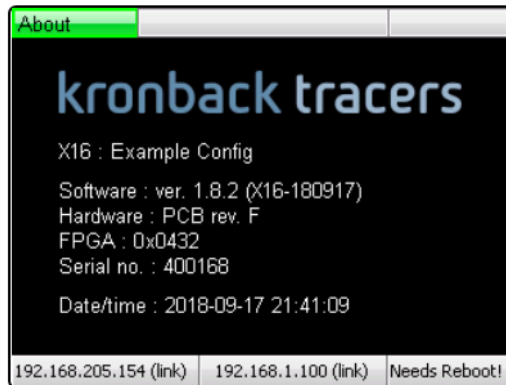
	Kronback ApS Lautrupvang 15 DK-2750 Ballerup Denmark Web: www.kronback.com Fax: (+45) 46 907 910		Page 19 of 57
--	---	--	---------------

kronback tracers	Status:	Version:
	FINAL	1.1
Titel : Configuration and Operation manual, kronback tracers X16		18/09/2018

1.1.1. Menu tree structure

- 1) About
- 2) Livetrace
 - (a) Channel select
- 3) Spectrum
 - (a) Channel select
 - (b) settings
- 4) RF Switch
- 5) Config
 - (a) Management Interface
 - (b) SFP Interface
 - (c) Show web passwords
- 6) About
- 7) Reboot
- 8) Safemode Reboot

1.1.2. About



The About screen shows main hardware and software revision information.

X16: The system name of the X16.
This can be set from the SETUP→SYSTEM web menu.

Software: version of the embedded software version in the ARM processor

Hardware: The hardware version of the X16 PCB

FPGA: Version of the FPGA image

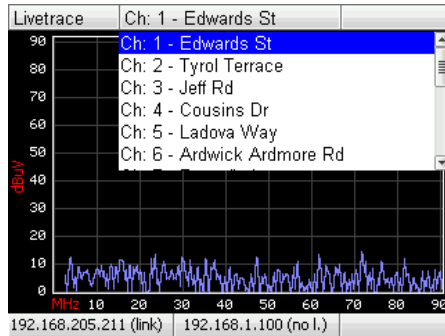
Serial: Serial number of the X16 unit

Date/time the current time setting of the X16

	Kronback ApS Lautrupvang 15 DK-2750 Ballerup Denmark Web: www.kronback.com Fax:(+45) 46 907 910		Page 20 of 57
--	--	--	---------------

kronback tracers	Status:	Version:
	FINAL	1.1
Titel : Configuration and Operation manual, kronback tracers X16		18/09/2018

1.1.3. Livetrace

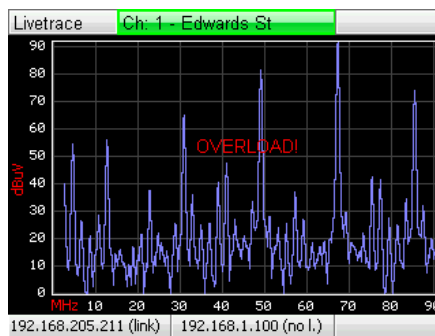


The livetrace display will show the current spectrum of one of the selected inputs.


The span of the Livetrace view is fixed 5 MHz to 85 MHz and is primarily used to display return path signals.

Overload

An overload text will be displayed if the input signal is exceeding the accepted range of the ADC converter inside the X16.

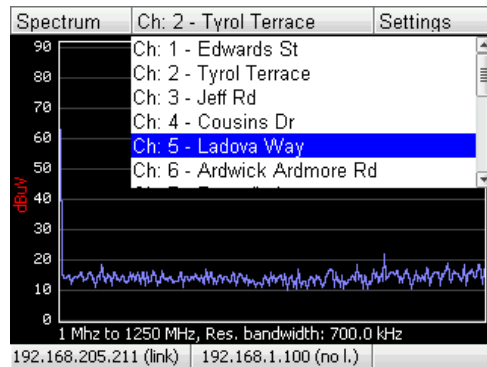


	Kronback ApS Lautrupvang 15 DK-2750 Ballerup Denmark Web: www.kronback.com Fax: (+45) 46 907 910		
			Page 21 of 57

	Status:	Version:
	FINAL	1.1
Titel : Configuration and Operation manual, kronback tracers X16		18/09/2018

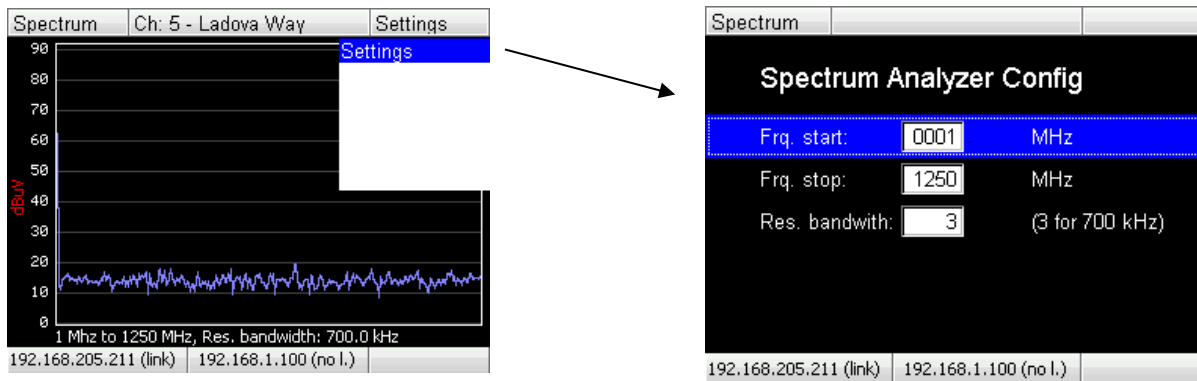
1.1.4. Spectrum

The spectrum view is a full bandwidth range spectrum analyser with variable span between 1 and 1250 MHz



The current start and stop frequency and Resolution bandwidth is displayed under the spectrum graph.

Enter the settings menu change the start, stop frequency and resolution bandwidth



The frequency start field specifies the start frequency of the spectrum graph can be set from 1 to 1250 and must be an integer value.

The frequency stop field specifies the stop frequency of the spectrum graph can be set from 1 to 1250 and must be an integer value.

The start frequency must always be lower than the stop frequency. The start and stop frequency must not be identical. Zero span is not a valid functionality of this spectrum analyser.

Kronback ApS Lautrupvang 15 DK-2750 Ballerup Denmark Web: www.kronback.com Fax: (+45) 46 907 910			Page 22 of 57
---	--	--	---------------

kronback tracers	Status:	Version:
	FINAL	1.1
Titel : Configuration and Operation manual, kronback tracers X16		18/09/2018

1.1.4.1. Resolution bandwidth

The resolution bandwidth can be set in 7 steps:

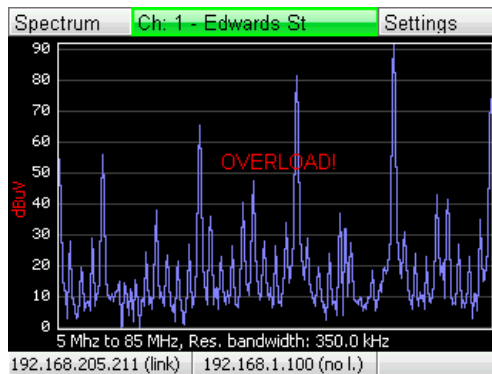
RBV value	RBW
0	5.6 MHz
1	2.8 MHz
2	1.4 MHz
3	700 kHz
4	350 kHz
5	175 kHz
6	67,5kHz

1.1.4.2. Maximum level.

Setting the maximum signal level that the spectrum analyser can accept before overload is not a part of the settings menu in the LCD display. The maximum level must be set from the SETUP→CHANNEL menu of the X16 web site. The maximum value can be set to between 90 and 120 dBuV

1.1.4.3. Overload

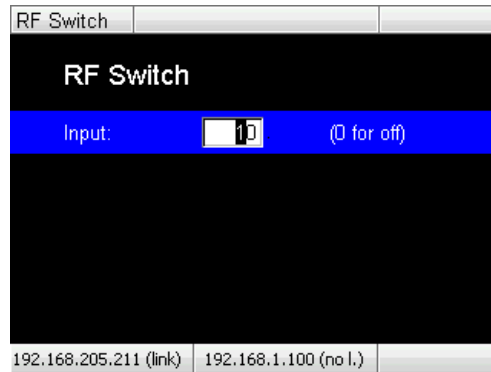
An Overload text will be displayed if the input signal is exceeding the accepted range of the ADC converter inside the X16.



	Kronback ApS Lautrupvang 15 DK-2750 Ballerup Denmark Web: www.kronback.com Fax: (+45) 46 907 910		Page 23 of 57
--	---	--	---------------


kronback tracers	Status:	Version:
	FINAL	1.1
Titel : Configuration and Operation manual, kronback tracers X16		18/09/2018

1.1.5. RF switch

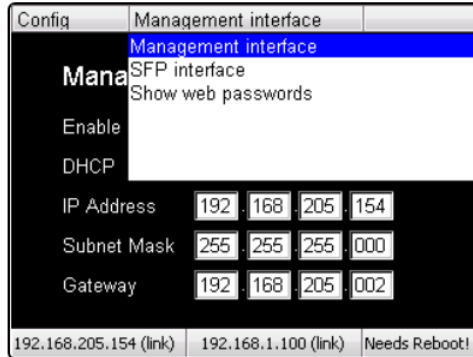


The Input field selects which input that is sent to the RF switch output connector on the front panel of the X16. The value is between 01 and 16. Enter a 00 to disable the RF switch.

For more details of the CW generator, please refer to the section 1.3 of this manual.

	Status:	Version:
	FINAL	1.1
Titel : Configuration and Operation manual, kronback tracers X16		18/09/2018

1.1.6. Config



1.1.6.1. Management Interface

For instructions on changing the Ethernet configuration using the LCD display please refer to section 1.5 of this manual

1.1.6.2. SFP interface

For instructions on changing the SFP network interface configuration using the LCD display please refer to section 1.6 of this manual

1.1.6.3. Show web passwords.

Using this menu, passwords to enter the web interface can be retrieved:



kronback tracers	Status:	Version:
	FINAL	1.1
Titel : Configuration and Operation manual, kronback tracers X16		18/09/2018

2. Specifications

2.1. RF specifications

2.1.1. Input 1 – 16

- Connector: F-type 75 ohm, AC coupled, 100V DC isolation
- Frequency response: 3-1218 MHz
- Return loss return path: >18dB
- Return loss downstream: 18dB@40 MHz, - 1.5 dB/oct
- Isolation: >60 dB

2.1.2. OUTPUTS - GENERATOR AND SWITCH

- Frequency range: 3-1218 MHz
- Frequency steps: 10 kHz
- Frequency error: <5 kHz
- Level range: 30 dBuV - 100 dBuV
- Level steps: 1 dB
- Level error: <0.5 dB
- Return loss: >18 dB

2.2. Connectors

- F-type 75 ohm, AC coupled

2.3. Indicators

- 16 LEDs indicating analyzer status
- 16 LEDs indicating LCD status
- 16 LEDs indicating switch position
- 2 LEDs indicating RF output activity
- 2 LEDs indicating power and network status

2.4. Physical Specifications

- Height 43.8 mm (1 unit)
- Width 482 mm (standard 19" dimensions)
- Depth 225 mm
- Weight 2.7 Kg

	Kronback ApS Lautrupvang 15 DK-2750 Ballerup Denmark Web: www.kronback.com Fax: (+45) 46 907 910		Page 26 of 57
--	---	--	---------------

kronback tracers	Status:	Version:
	FINAL	1.1
Titel : Configuration and Operation manual, kronback tracers X16		18/09/2018

2.5. Electrical

- 48V DC Connector Reverse polarity protection
- Power consumption <25 Watt

2.6. Environmental

- Operating Temperature: 5°C ~ 45°C
- Storage Temperature: -20°C ~ 55°C
- Operating Humidity: 10% ~ 90%, non-condensing
- Fanless device

2.7. Network

- Fast Ethernet, control and management
 - IEEE 802.3 10Base-T Ethernet
 - IEEE 802.3u 100Base-Tx Ethernet
 - Fixed IP address and DHCP support
- Giga Bit Ethernet, RTP streaming
 - IEEE 802.3ab 1000BASE-TX

2.8. Management

- Remote
 - Web
 - SNMP
 - SYSLOG
 - USB
 - TELNET
 - FTP
- Local control
 - Joystick

	Kronback ApS Lautrupvang 15 DK-2750 Ballerup Denmark Web: www.kronback.com Fax:(+45) 46 907 910		Page 27 of 57
--	--	--	---------------

kronback tracers	Status:	Version:
	FINAL	1.1
Titel : Configuration and Operation manual, kronback tracers X16		18/09/2018

3. USER INTERFACE




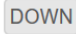
3.1. CHANNEL SELECTION



All the tools that are available from the X16 web interface uses the same channel selection fields.

3.1.1. Channel selection toggle button:



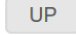
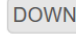
Press the  to toggle the display of the physical channel number


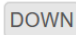
Physical channel number **off**:

 Cousins Dr    Use ↑ ↓ keys to select

The   buttons and the PC keyboard ↑ ↓ keys walks through the channel list sorted by channel names alphabetically.


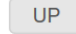
Physical channel number **on**:

 CH004 : Cousins Dr    Use ↑ ↓ keys to select

The   buttons and the PC keyboard ↑ ↓ keys walks through the channel list sorted by physical channel number

3.1.2. Text search

Make a text search in the selection box:

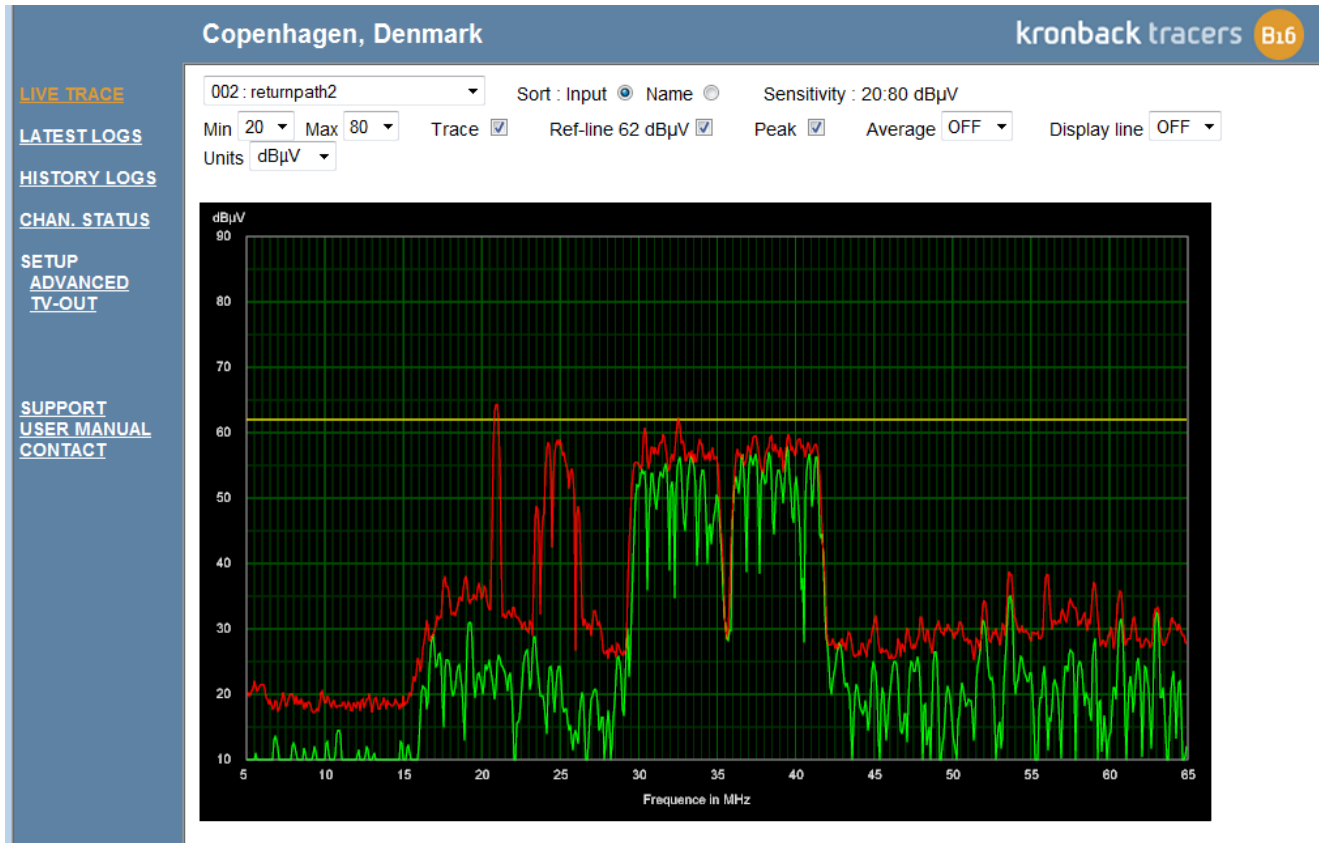
 dr    Use ↑ ↓ keys to select

CH004: Cousins Dr
CH011: Kencrest Dr

	Kronback ApS Lautrupvang 15 DK-2750 Ballerup Denmark Web: www.kronback.com Fax:(+45) 46 907 910		Page 28 of 57
--	--	--	---------------

kronback tracers	Status:	Version:
	FINAL	1.1
Titel : Configuration and Operation manual, kronback tracers X16		18/09/2018

3.2. LIVE TRACE



All settings in the **LIVE TRACE** window are active only in the local browser and will not affect other users that are concurrently using the X16.

3.2.1. Channel selection field

The channel selection field selects which input that is presented in the **LIVE TRACE** window. Multiple users can monitor any input simultaneously.

3.2.2. Sort

The channel selection field can be sorted by name or input number.

	Kronback ApS Lautrupvang 15 DK-2750 Ballerup Denmark Web: www.kronback.com Fax: (+45) 46 907 910		
			Page 29 of 57

kronback tracers	Status:	Version:
	FINAL	1.1
Titel : Configuration and Operation manual, kronback tracers X16		18/09/2018

3.2.3. Sensitivity

The X16 has 4 attenuation ranges that can be assigned to each input channel.

Attenuation	X16 noisefloor is below	Max signal level(1CW)
0 dB	10 dBuV	70dBuV
10 dB	20 dBuV	80dBuV
20 dB	30 dBuV	90dBuV
30 dB	40 dBuV	100dBuV

3.2.4. Min / Max fields



A zoom function on the Y-axis is possible by selecting the **Min** and **Max** fields. The selection is in steps of 10 dB.

The zoom values are reset when a new channel is selected.

3.2.5. Trace

Selecting this field enables the green trace (**LIVE TRACE**) in the trace window. The trace is updated approximately 2 times per second.

3.2.6. Ref line

Selecting this field enables the yellow line in the trace window. The reference level is configured individually for each channel in the **SETUP→INPUT** menu. The reference value should be set to the cable modems peak level and is used as reference for all carrier/noise (C/N) calculations within the X16.

	Kronback ApS Lautrupvang 15 DK-2750 Ballerup Denmark Web: www.kronback.com Fax: (+45) 46 907 910		Page 30 of 57
--	---	--	---------------

kronback tracers	Status:	Version:
	FINAL	1.1
Titel : Configuration and Operation manual, kronback tracers X16		18/09/2018

3.2.7. Peak

Selecting this field enables the red trace (peak hold) in the trace window.

3.2.8. Average

Selecting this field to anything else than OFF, will enable a blue average trace. The average line is based on a number of consecutive green traces. The maximum number of green traces averaged is 25.

3.2.9. Display line



A general purpose display line can be activated. The selection list either in dBuV or dBmV according to the **units** selection field.

3.2.10. Units

The X16 can display both dBmV and dBuV units. The setting is individual for each browser that connects to the X16, and the selection changes all absolute read-out in the X16 web user interface.

3.2.11. Cookie

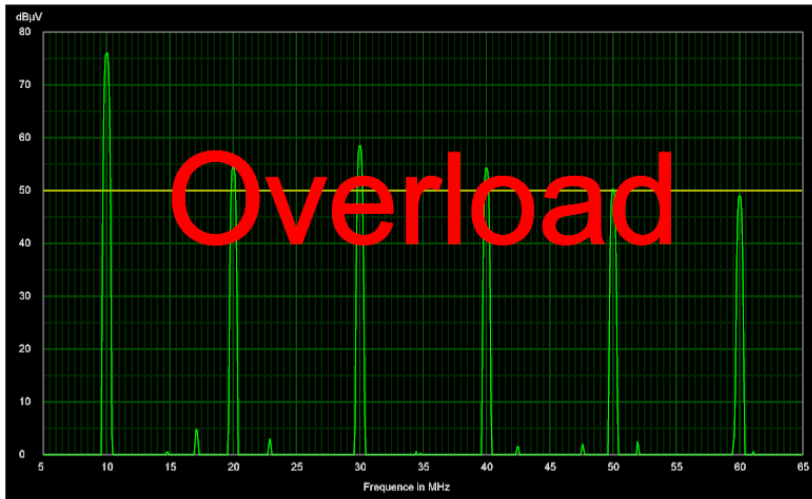
All settings in the LIVE TRACE window are stored in a COOKIE to ensure that the window resumes in the same mode after closing the browser.

	Kronback ApS Lautrupvang 15 DK-2750 Ballerup Denmark Web: www.kronback.com Fax: (+45) 46 907 910		Page 31 of 57
--	---	--	---------------

kronback tracers	Status:	Version:
	FINAL	1.1
Titel : Configuration and Operation manual, kronback tracers X16		18/09/2018

3.2.12. Overload

An Overload text is displayed in the **LIVE TRACE** window 1-2 dB before overload state is reached.



3.3. TIME LINE



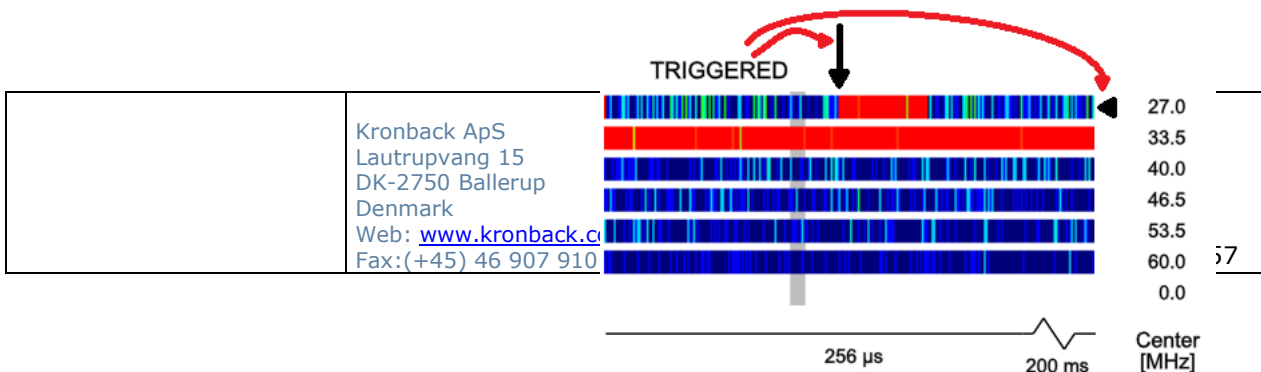
The Timeline function waits up to 3000 micro seconds for a cable modem to communicate.


If a modem is detected, then the X16 samples 256 micro seconds of the full return path signal and then passes this data through up to 16 bandpass filters. The output of each bandpass filter is then presented on separate lines.

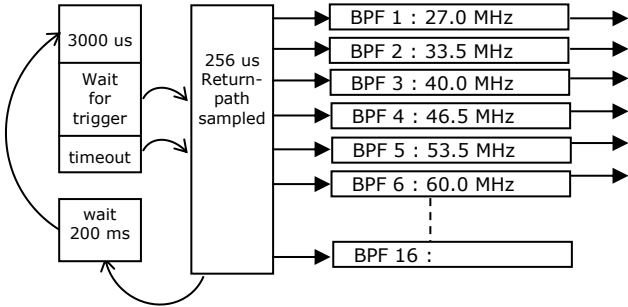
If no cable modems are detected within the 3000 microseconds timeout period then the trigger process is timing out and performs the sampling anyway, but without showing the "TRIGGERED" message.

After 200 milliseconds (1/5 of a second) the process is repeated. This results in 5 timeline measurements per second.

To preserve the graphical overview only 3 of the measurements are presented.



	Status:	Version:
	FINAL	1.1
Titel : Configuration and Operation manual, kronback tracers X16		18/09/2018



The timeline view is based on the raster definitions in the X16 SETUP→RASTERS menu

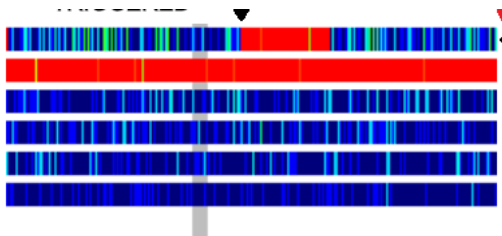
3.3.1. Timeline Controls



Pause: stops the timeline page from updating

Sum: defines the number of timeline graphs that is used for the pulse counting. It can be set from 3 to 25

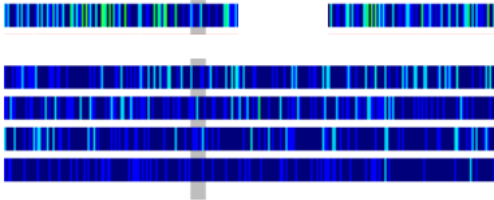
Grey bar:



kronback tracers	Status:	Version:
	FINAL	1.1
Titel : Configuration and Operation manual, kronback tracers X16		18/09/2018

3.3.2. Counting the pulses.

All the cablemodems data (the red parts) are removed from the picture above.



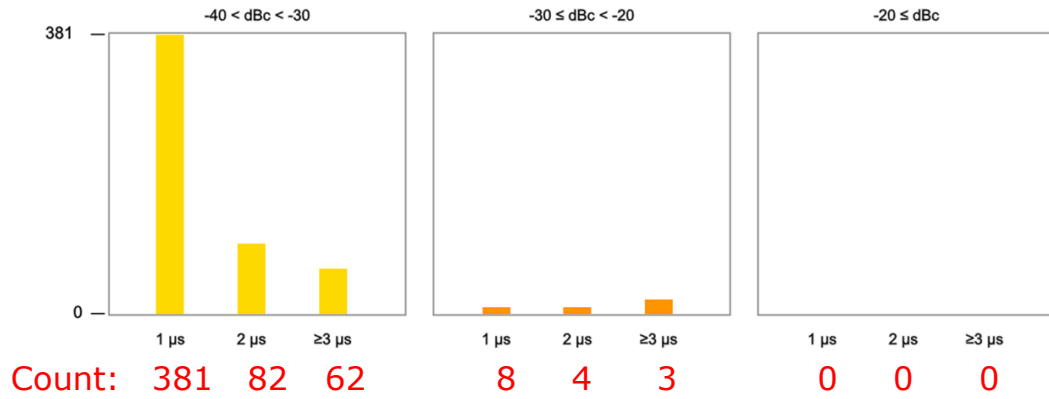
A simple counting of pulses is performed based on

- pulse width
- pulse strength

Note: Every pixel of the timeline graph corresponds to 1 microsecond (us)

	Pulse strength Below reference line	Pulse width	count	example
	< 20 dBc	1 us	0	
		2 us	0	
		3 us or more	0	
	20-30 dBc	1 us	3	
		2 us	4	
		3 us or more	8	
	> 30 dBc	1 us	381	
		2 us	82	
		3 us or more	62	

Noise Distribution on Active Rasters



kronback tracers	Status:	Version:
	FINAL	1.1
Titel : Configuration and Operation manual, kronback tracers X16		18/09/2018

3.4. LATEST LOG

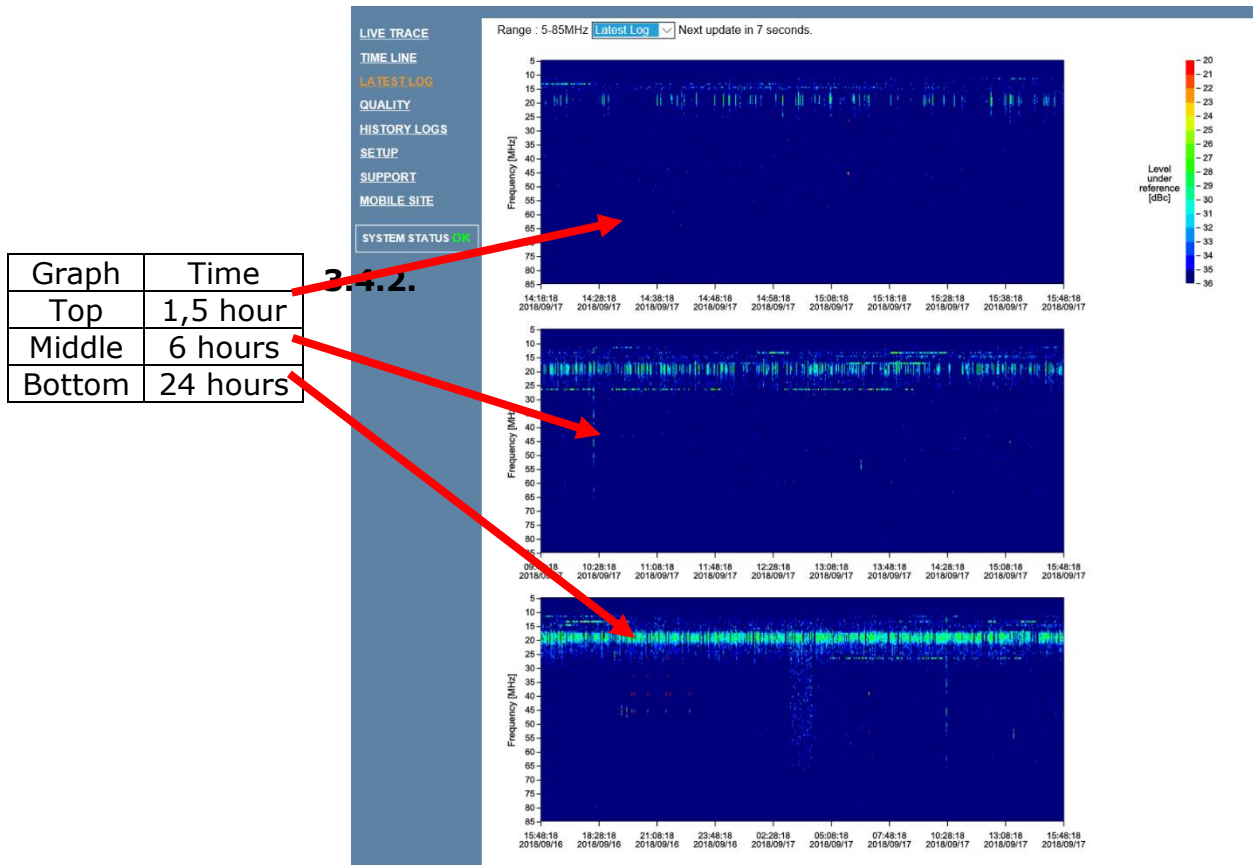
The **LATEST LOG** page displays the channels that are currently being logged. The channel number and names are presented. The timestamp shows the time of the latest logged file.

3.4.1. LATEST LOG graph

This graph is divided in 3 subgraphs. The top graph (1,5hours) is consolidated into the middle graph (6 hours) which is again consolidated in the bottom graph (24hours).

The 1,5 hours graph is based on 600 samples. Each dot on the x axis represents a sample. Since X16 stores a sample each 9th second the width is

$$600 \text{ samples} \times 9 \text{ sec/sample} = 5400 \text{ sec} = 90 \text{ min} = 1,5\text{h}$$



kronback tracers	Status:	Version:
	FINAL	1.1
Titel : Configuration and Operation manual, kronback tracers X16		18/09/2018

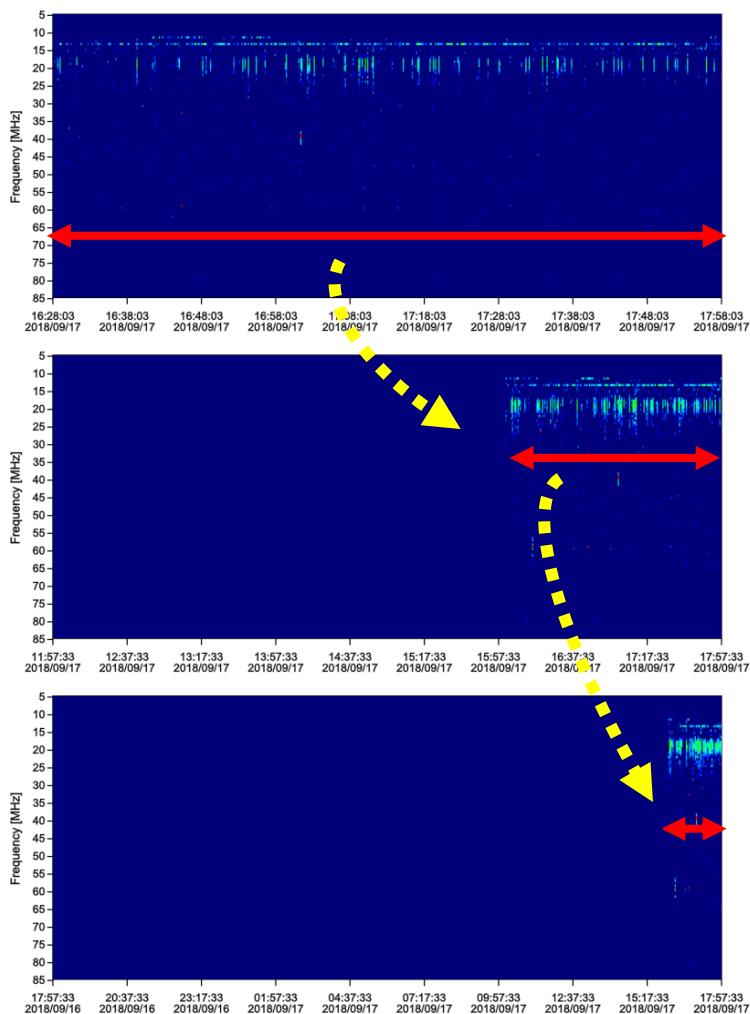
3.4.3. Consolidation

Consolidating is done by merging a slice with a width of 6 dots into a slice of 1 dot.

The consolidation is performed by following a "worst case" approach, so that the most red of the 6 values is chosen in a "highest takes precedence" principal.

As a consequence the 24 hours graph will look worse (more red) than the 6 hours graph and the 6 hours graph will look worse (more red) than the 1,5 hours graph.

Each 24 hours the bottom graph (24 hours graph) is saved in the history storage. This storage is accessible in the main menu of **X16** under **HISTORY LOGS**



	Kronback ApS Lautrupvang 15 DK-2750 Ballerup Denmark Web: www.kronback.com Fax: (+45) 46 907 910		Page 38 of 57
--	---	--	---------------

kronback tracers	Status:	Version:
	FINAL	1.1
Titel : Configuration and Operation manual, kronback tracers X16		18/09/2018

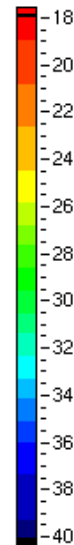
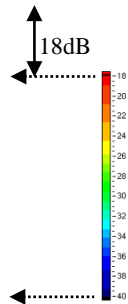
3.4.4. Color Coding

The log graphs are color-coded. The color represents the difference between the yellow line and the actual trace.

Differences less than 18 dB are pure red and differences over 40 dB are pure blue.

Example: Green color in the **LATEST LOG** graph represents a difference between the yellow line and the signal off approximately 30 dB.

So the green parts of the graph represent a C/N of 30 dB

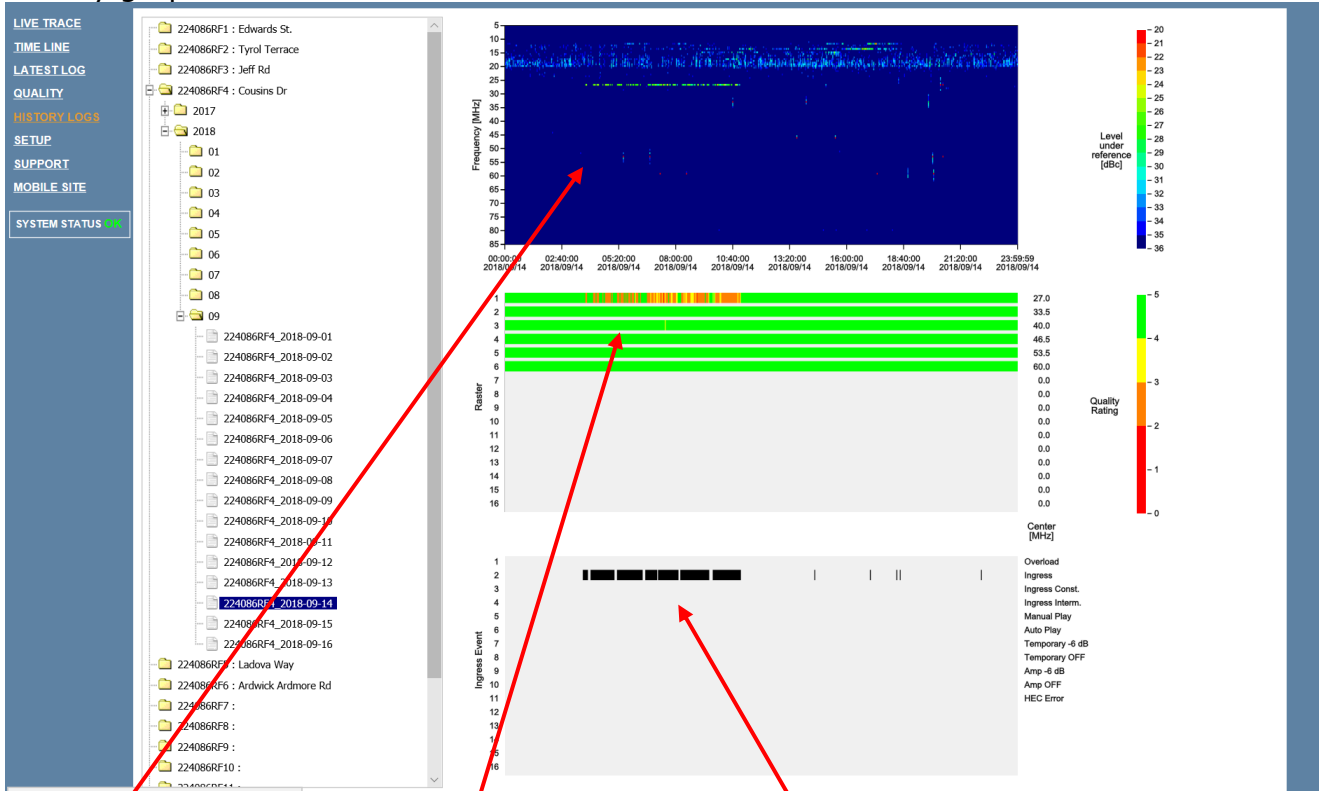


kronback tracers	Status:	Version:
	FINAL	1.1
Titel : Configuration and Operation manual, kronback tracers X16		18/09/2018

3.5. HISTORY LOG

3.5.1. 24 hours storage

History graphs are stored each 24 hours.



24 Hours graph

Quality per raster

FLAGS (Ingress detected)

3.5.2. Color coding

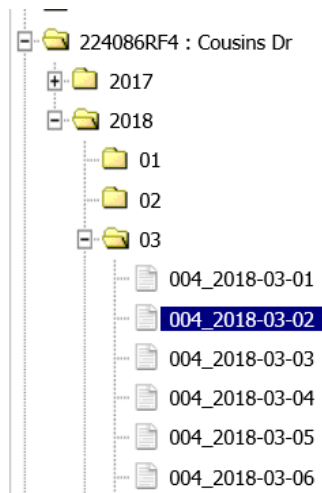
The history graph uses same color coding as the **LATEST LOG** graph

kronback tracers	Status:	Version:
	FINAL	1.1
Titel : Configuration and Operation manual, kronback tracers X16		18/09/2018

3.5.3. Log storage

The history data are stored in a non-volatile memory of the X16. History graphs are accessed by entering the tree structure in the **HISTORY LOG** menu. This structure is organized in

Channel → year → month → day

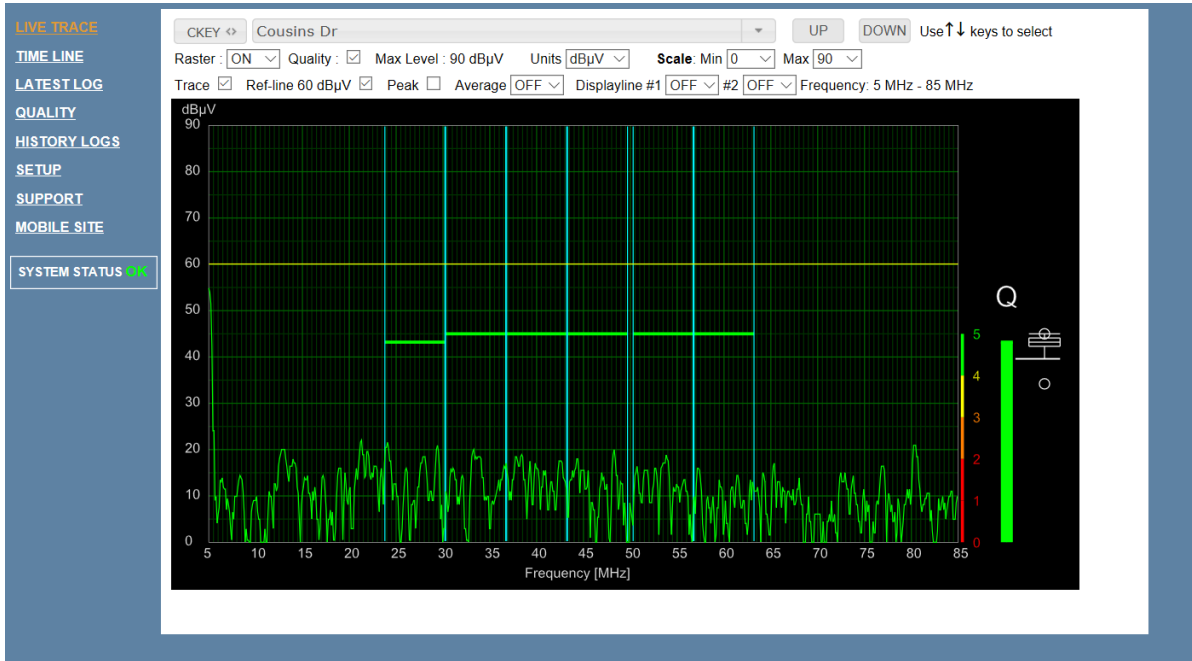


3.5.4. Log capacity

The internal storage capacity of X16 is 1 GByte. The X16 firmware occupies 250 Mbyte, 100 Mbyte are reserved for latest log storage, leaving 650 MByte for the history log. When this storage is filled the X16 will throw away the oldest data.

kronback tracers	Status:	Version:
	FINAL	1.1
Titel : Configuration and Operation manual, kronback tracers X16		18/09/2018

3.6. RASTER



Rasters are set in the **SETUP→RASTER** menu

3.6.1. aster parameters

The spectrum in X16 can be divided into 16 rasters. The rasters are defined as a center frequency and a bandwidth. The center frequency can be selected with 2 decimals, and the bandwidth can be selected in steps of 800kHz, 1,6MHz, 3,2 MHz and 6,4 MHz.

The rasters are used for calculation of the channel quality.

	Kronback ApS Lautrupvang 15 DK-2750 Ballerup Denmark Web: www.kronback.com Fax: (+45) 46 907 910		
			Page 42 of 57

kronback tracers	Status:	Version:
	FINAL	1.1
Titel : Configuration and Operation manual, kronback tracers X16		18/09/2018

3.7. QUALITY

LIVE TRACE

TIME LINE

LATEST LOG

QUALITY

HISTORY LOGS

SETUP

SUPPORT

MOBILE SITE

SYSTEM STATUS OK

Quality Rating

Next update in 4 min 41 sec Update status 100%

CHANNEL		TODAY [Mon Sep 17 2018]																
▲ ckey	◆ TXT	◆ 24H	◆ 18H	◆ 12H	◆ 06H	◆ 16/9	◆ 15/9	◆ 14/9	◆ 13/9	◆ 12/9	◆ 11/9	◆ 10/9	◆ 9/9	◆ 8/9	◆ 7/9	◆ 6/9	◆ 5/9	◆ 4/9
224086RF1	Edwards St.		4.6	4.3	4.6	4.5	4.7	4.4	4.5	4.4	4.5	4.6	4.7	4.7	4.4	4.3	4.3	4.4
224086RF2	Tyrol Terrace		4.7	4.7	4.6	4.7	4.6	4.6	4.6	4.8	4.8	4.7	4.8	4.7	4.8	4.6	4.6	4.5
224086RF3	Jeff Rd		4.8	4.9	4.9	4.6	4.5	4.2	4.8	4.8	4.9	4.9	4.7	4.9	4.9	4.9	4.8	4.8
224086RF4	Cousins Dr		4.4	3.5	4.0	4.5	4.7	3.6	3.8	3.6	4.5	4.5	4.5	4.5	3.7	3.7	3.5	3.7
224086RF5	Ladova Way		4.8	4.9	4.9	4.8	4.9	4.8	4.8	4.8	4.8	4.7	4.6	4.7	4.8	4.7	4.7	4.7
224086RF6	Ardwick Ardmor...		4.5	4.5	4.5	4.3	4.3	4.3	4.3	4.3	4.1	4.3	4.1	4.3	4.0	4.3	4.2	4.1
224086RF7																		
224086RF8																		
224086RF9																		

The X16 constantly evaluates the quality of each channel and presents the result in the Quality overview page. The overview has a depth of 14 days. The current day is divided in its four quarters, (night, before noon, afternoon and evening)

The quality rating is between 0 and 5 where 5 is the best quality.

The real-time Quality calculation can be observed in the livetrace graph, when the quality field is checked

LIVE TRACE

TIME LINE

LATEST LOG

QUALITY

HISTORY LOGS

SETUP

SUPPORT

MOBILE SITE

SYSTEM STATUS OK

CKEY: Cousins Dr

Raster: ON Quality: Max Level: 90 dBµV Units: dBµV Scale: Min 0 Max 90

Trace: Ref-line 60 dBµV Peak Average OFF Displayline #1 #2 OFF Frequency: 5 MHz - 85 MHz

Quality field checked

Quality BOX-PLOT view

kronback tracers	Status:	Version:
	FINAL	1.1
Titel : Configuration and Operation manual, kronback tracers X16		18/09/2018

3.7.1. Quality BOX PLOT view

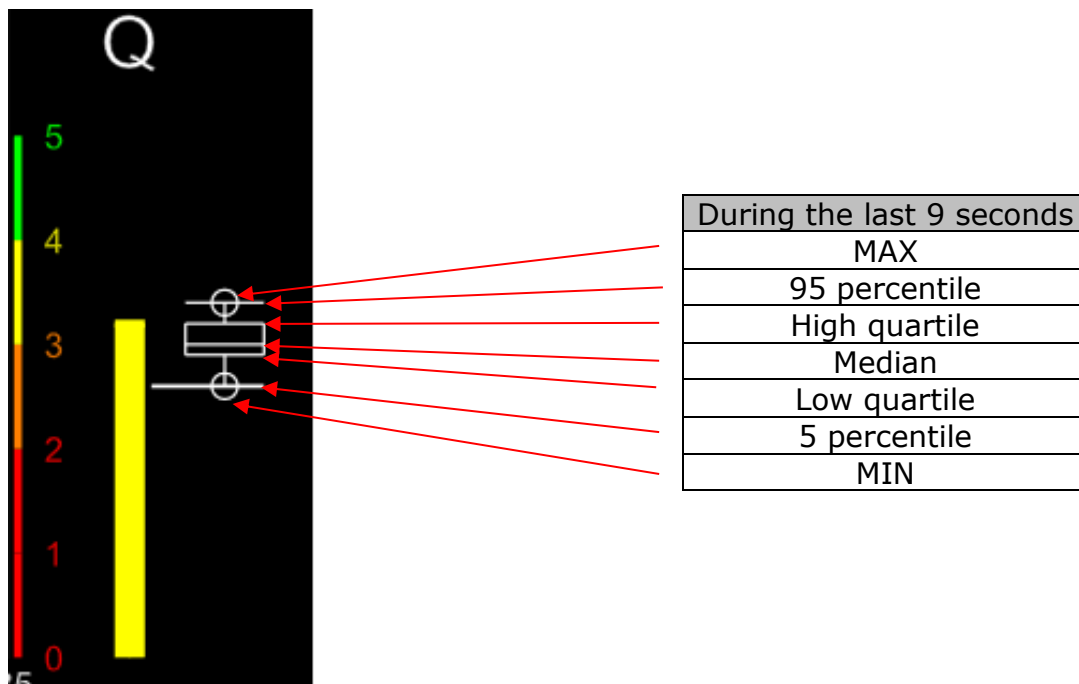
The BOX PLOT view is a running evaluation of the quality of each channel. The view is presenting the quality in a depth of 9 seconds.

Since the X16 is measuring the quality 5 times per second, a 9 second period equals $9 \times 5 = 45$ measurements. During this period the worst and best quality figure is presented (the top and bottom circle). The middle box is showing the quartiles and median.

The lines between the box and the circle represents the 5 and 95 percentile.

One interesting feature of the BOX PLOT is that 50% of all data is always contained inside the box

For more info about how a BOX PLOT is presents its data, see https://en.wikipedia.org/wiki/Box_plot











kronback tracers	Status:	Version:
	FINAL	1.1
Titel : Configuration and Operation manual, kronback tracers X16		18/09/2018

4. Setup

4.1. S16 Setup

Manage S16 devices

INPUT	IP ADDRESS	PORT	DELAY	STATUS		
13	.					
14						
15						
16						

The **SETUP→S16 Setup** menu is used to define the topology when multiple external **S16** switches are connected to **X16** for input expansion.

4.1.1. Switch topology

Up to 4 external switches can be entered, providing a 76 input **X16** system. If no external switches are used, the setting **X16** nothing should be entered in this setup menu.

The number of inputs that is set via the S16 setup configuration menu is globally changing all pages and menus in the **X16** related to inputs.

4.1.2. Input steps

Each additional input switch provides 16 inputs, but occupies 1 input for the cascade connection to **X16**, so the input increments are in steps of 15.

Number of switches	Number of inputs
X16 only	16
1	31
2	46
3	61
4	76

	Kronback ApS Lautrupvang 15 DK-2750 Ballerup Denmark Web: www.kronback.com Fax:(+45) 46 907 910		Page 45 of 57
--	--	--	---------------

kronback tracers	Status:	Version:
	FINAL	1.1
Titel : Configuration and Operation manual, kronback tracers X16		18/09/2018

4.1.3. IP address

IP address of the connected switches. These must be formatted as IP-addresses (e.g. 192.168.100.81) DNS names are not allowed.

4.1.4. Port

The port number used for the IP socket connection to the external switches. It is factory preset to 1000 in the S16 switches but can be changed from the console interface of the S16.

4.1.5. Delay

The timeout parameter decides how long time [ms] the X16 switch routine will try to re-connect to the S16 in case of missing network connectivity. For most networks 60 ms are recommended.

4.1.6. Insertion loss compensation

An internal routine in the **X16** ensures that the measurements on the cascaded input 1 to 48 are compensated for the extra insertion loss caused by the **S16**.

4.1.7. State check

The state of each **S16** and **X16** setting can be verified by viewing the LED´s over each f-connector.

To verify correct configuration, simply run through all inputs from the livetrace menu. Check that the correct LED´s on the **X16** and **S16** fronts are lighting.

For further assurance, a signal generator could be connected to each input for verification of correct signal paths and levels.

	Kronback ApS Lautrupvang 15 DK-2750 Ballerup Denmark Web: www.kronback.com Fax:(+45) 46 907 910		Page 46 of 57
--	--	--	---------------

kronback tracers	Status:	Version:
	FINAL	1.1
Titel : Configuration and Operation manual, kronback tracers X16		18/09/2018


4.2. Network Setup

4.2.1. Dynamic or static IP address.


NETWORK SETUP


Enter changes to configuration
Then click "Save"..

SNMP


SNMP Enable 

Management interface (eth0)

Enable 


DHCP 

IP Address 

Default Gateway 

Subnet Mask 

SFP interface (sfp0)

Enable 

IP Address 

Default Gateway 

Subnet Mask 

Packet filter 

	Kronback ApS Lautrupvang 15 DK-2750 Ballerup Denmark Web: www.kronback.com Fax: (+45) 46 907 910		Page 47 of 57
--	---	--	---------------

kronback tracers	Status:	Version:
	FINAL	1.1
Titel : Configuration and Operation manual, kronback tracers X16		18/09/2018

4.2.2. SNMP Enable

The X16 will respond to SNMP GET commands. The MIB file is available from the www.kronback.com website.

SNMP SET and SNMP Trap are not supported.

The SNMP community string is fixed set to **PUBLIC**

4.2.3. Enable (eth0)

The management network interface can be disabled for debug purposes. To re-enable the management interface use the LCD panel of the X16

4.2.4. DHCP (eth0)

The management interface of X16 can work in static mode or in DHCP.

The dynamic address assigned by a DHCP server can be verified on the LCD display on the front of the X16 unit.

4.2.5. IP address, Default gateway and Subnet Mask (eth0)

These are the IP address setting of the management interface.

This address must not fall within the same subnet range as the SFP network

4.2.6. Enable (sfp0)

The management network interface can be disabled for debug purposes. To re-enable the management interface use the LCD panel of the X16

4.2.7. IP address, Default gateway and Subnet Mask (sfp)

These are the IP address setting of the management

The address must not be in the management interface subnet range

4.2.8. Packet filter

Enter 0 for default packet filtering setup. Don't enter other values unless instructed by support.

The value 0 means that all incoming multicast packages will be discarded.






	Kronback ApS Lautrupvang 15 DK-2750 Ballerup Denmark Web: www.kronback.com Fax: (+45) 46 907 910		Page 48 of 57
--	---	--	---------------

kronback tracers	Status:	Version:
	FINAL	1.1
Titel : Configuration and Operation manual, kronback tracers X16		18/09/2018

4.3. Date & Time

TIME SETUP

Used for defining how often the time will be updated

Use Daylight Saving Time 
 Enable 
SNTP Server 
Local time zone  *hours*
Update  *Min [1-1440]*

4.3.1. Use Daylight Saving Time

Used for enabling the use of Daylight Saving, when updating time

4.3.2. Enable

Used for defining if SNTP time update is enabled

4.3.3. SNTP Server

Used for defining the IP address of domain of the SNTP-server

4.3.4. Local Time zone

Enter local time zone in hours, for example: 2 for GMT+2

4.3.5. Update

This value is defined as minutes between SNTP updates.

	Kronback ApS Lautrupvang 15 DK-2750 Ballerup Denmark Web: www.kronback.com Fax: (+45) 46 907 910		Page 49 of 57
--	---	--	---------------

kronback tracers	Status:	Version:
	FINAL	1.1
Titel : Configuration and Operation manual, kronback tracers X16		18/09/2018

4.4. Security setup

SECURITY SETUP

Enter changes to configuration
Then click "Save"..

SETUP MENU

password:

MAIN SITE

password:

From the security page user credentials and License Key can be entered.

4.4.1. SETUP MENU

The X16 has only a single user profile. This profile is used to ensure that only approved users can enter the **SETUP** menu. The username and password is sent unencrypted over the IP network.


4.4.2. MAIN SITE

The main site password prompts all users who wants to access the X16 user interface. Enter this password. The SETUP password from the setting above will work as well for as a global password for the X16 website.

4.4.3. LOST Password

Both the SETUP and MAIN passwords can be verified in the X16 front LED display under CONFIG→SHOW WEB PASSWORDS

	Kronback ApS Lautrupvang 15 DK-2750 Ballerup Denmark Web: www.kronback.com Fax:(+45) 46 907 910		Page 50 of 57
--	--	--	---------------

	Status: FINAL	Version: 1.1
	Titel : Configuration and Operation manual, kronback tracers X16	

4.5. Channel

Please refer to the chapter "Raster and channel status" input setup

CHANNEL SETUP

Enter changes to configuration
Then click "Save".

Save Save all local and switch-channels

Show all fields

Channel Key	Name / Node	Description	Frq. min.	Frq. max.	Max dBµV	Ref. level dBµV	Input	Enable Logging	In Use	Modem Detection	
224086RF1	Edwards St.		5	204	90	60	1	<input checked="" type="checkbox"/>	<input checked="" type="checkbox"/>	Auto	<input checked="" type="checkbox"/>
224086RF2	Tyrol Terrace		5	85	90	60	2	<input checked="" type="checkbox"/>	<input checked="" type="checkbox"/>	Auto	<input checked="" type="checkbox"/>
224086RF3	Jeff Rd		5	204	90	60	3	<input checked="" type="checkbox"/>	<input checked="" type="checkbox"/>	Auto	<input checked="" type="checkbox"/>
224086RF4	Cousins Dr		5	85	90	60	4	<input checked="" type="checkbox"/>	<input checked="" type="checkbox"/>	Auto	<input checked="" type="checkbox"/>
224086RF5	Ladova Way		5	85	90	60	5	<input checked="" type="checkbox"/>	<input checked="" type="checkbox"/>	Auto	<input checked="" type="checkbox"/>
224086RF6	Ardwick Ardmore Rd		5	85	90	60	6	<input checked="" type="checkbox"/>	<input checked="" type="checkbox"/>	Auto	<input checked="" type="checkbox"/>
224086RF7			5	85	90	60	7	<input checked="" type="checkbox"/>	<input checked="" type="checkbox"/>	Auto	<input checked="" type="checkbox"/>

4.5.1. Channel Key

Global Channel number when the X16 is in master/slave mode. When multiple X16 are grouped together in a master/slave setup, each input has a global channel number.

The Global channel number is used to identify each channel.

4.5.2. Name / Node

The name of each input is entered in the Name/Node field to describe the node number.

In some cases, this name will also be used as a database reference for such as external GIS system.

The name will be used throughout the X16 GUI to identify the input. This field should always be filled out

4.5.3. Description

The description field can be used for supplementary information to the name/node field.

The field is not used as look up reference for external systems and could be left blank.

	Kronback ApS Lautrupvang 15 DK-2750 Ballerup Denmark Web: www.kronback.com Fax: (+45) 46 907 910		
--	---	--	--

kronback tracers	Status:	Version:
	FINAL	1.1
Titel : Configuration and Operation manual, kronback tracers X16		18/09/2018

4.5.4. Frq. Min

Low frequency setting of the upstream frequency range.

4.5.5. Frq. Max

High frequency of the upstream frequency range

4.5.6. Max dBuV

The Max dBuV level defines the maximum level that can be present on the channel before overload appears.

The value is equivalent to 1 CW present on the channels input.

Typical modem reference level should be 20dB under this maximum level to avoid overload if multiple modems are simultaneously communicating.

4.5.7. Ref. level dBuV

The Ref Level defines the modem level of the DOCSIS modem bursts. It is used globally in the X16 to define the C/N level of each channel and raster. The Ref. Level is visualized in the livetrace view's yellow line.

4.5.8. Input

This number displays the physical input of each X16 and will always be between 1 and 16.

4.5.9. Enable Logging

To activate the cyclic logging of each channel, enabled it with a checkmark

4.5.10. In use

This field displays the status of each channel.

It must always be on to display that the channel is active and in use.

4.5.11. Modem Detection

In Auto mode this each of the 16 check boxes will show on which rasters the X16 has identified DOCSIS modem traffic.

In Manual mode this autodetection can be forced to on or off by the operator.

Only active rasters will be used for quality detection and presentation in the raster-based GUI views throughout the X16.

Refer to the SETUP→RASTERS men to see the 16 raster definitions.

	Kronback ApS Lautrupvang 15 DK-2750 Ballerup Denmark Web: www.kronback.com Fax:(+45) 46 907 910		Page 52 of 57
--	--	--	---------------

kronback tracers	Status:	Version:
	FINAL	1.1
Titel : Configuration and Operation manual, kronback tracers X16		18/09/2018

4.6. System

SYSTEM SETUP

Enter changes to configuration
Then click "Save"..

Device Name 

kronback tracers	Status:	Version:
	FINAL	1.1
Titel : Configuration and Operation manual, kronback tracers X16		18/09/2018

4.7. Slaves

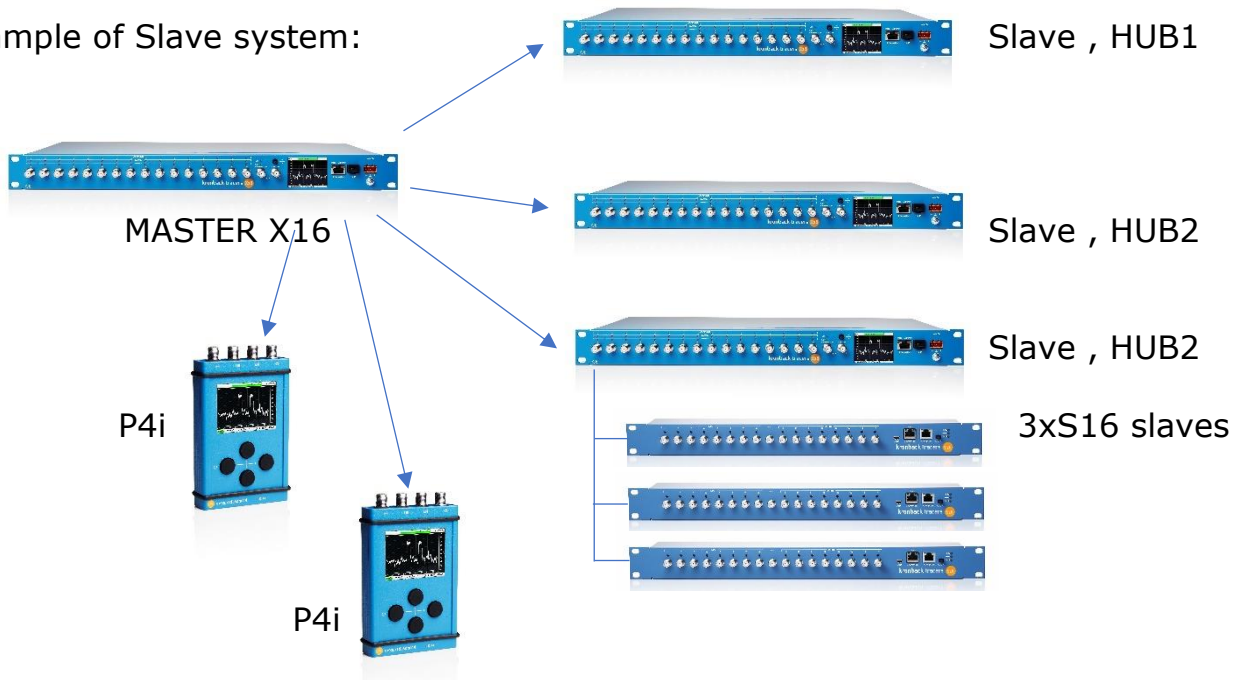
Slave setup

IP ADDRESS	STATUS	
192.168.205.123	Unknown	<input type="button" value="remove"/>
192.168.205.124	Unknown	<input type="button" value="remove"/>
192.168.205.125	Unknown	<input type="button" value="remove"/>

<input type="text" value="192.168.205.125"/>	<input type="button" value="add slave"/>
--	--

An unlimited number of X16 and P4i units can be added to the slave table. The slaves can then be accessed from the MASTER X16 web interface. Slaves can be added and removed on the fly.

Example of Slave system:



	Kronback ApS Lautrupvang 15 DK-2750 Ballerup Denmark Web: www.kronback.com Fax: (+45) 46 907 910		Page 54 of 57
--	---	--	---------------

kronback tracers	Status:	Version:
	FINAL	1.1
Titel : Configuration and Operation manual, kronback tracers X16		18/09/2018

4.8. SYSLOG

SYSLOG SETUP

Enter changes to configuration
Then click "Save"..

Syslog server 1 

Syslog server 2 

X16 can report alarms and warnings in the SYSLOG format.
Up to 2 SYSLOG destinations can be defined. These 2 addresses can be both in the IP format or as a DNS name.
To disable syslog messages, leave the fields blank.

kronback tracers	Status:	Version:
	FINAL	1.1
Titel : Configuration and Operation manual, kronback tracers X16		18/09/2018

4.9. Software Update

Version information:

Release	X16-180917
SW version	1.8.2
SW build	Sep 17 2018 20:15:38 (release)
HW version	PCB rev. C
FPGA	Rev. 0x0432

File uploader

Choose a file to upload:

Uploading a release zip file will start the software update process.

Configuration Export and Import

To export system configuration use:

To import system configuration, use **File uploader** function above with a config.txt file and reboot X16.

The file uploader section of the software update page can be used to place any file in the X16 root directory. For software upgrades the zip file contains a full upgrade package and will upgrade all files inside the X16. After choosing the upgrade file select upload file.

File uploader

Choose a file to upload: x16-180917.zip 1

2

Uploading a release zip file will start the software update process.

This will upload the zip file in to the root directory of the X16. The progress of the upload can be observed by the green progress bar.

File uploader

kronback tracers	Status:	Version:
	FINAL	1.1
Titel : Configuration and Operation manual, kronback tracers X16		18/09/2018

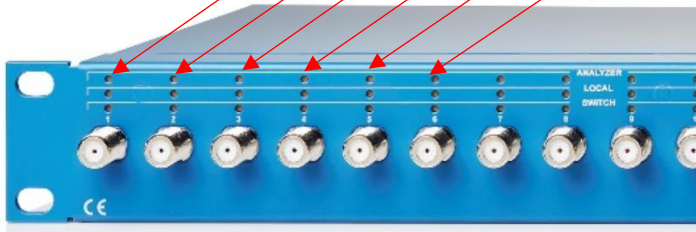
To activate the upgrade it is necessary to reboot the X16.

File uploader

The file has been uploaded. Du you want to reboot the system?

After reebooting the X16 there will be approximately 2 minutes without access to the unit, but during the upgrade process its status can be verified on the front LED 's of the Input 1-6 F connectors.

- 0 check conditions for upgrade
- 1 Renaming zip file to upgrading.zip
- 2 Deleting files from last upgrade
- 3 extracting zip
- 4 Moving new files in and old files out
- 5 cleanup and migration steps
- 6 file operation done



Note: For the upgrade procedure to work the X16 must **not** be placed behind a firewall using NAT, Network Address Translation.

Do you like this solution?
Please contact Heynen for distribution in BENELUX.



[heynen@heynen.com](mailto:heynen@heyнен.com)
 NL tel: +31 (0)485-550909
 BE tel: +32 (0)11-600909
 LUX tel: +352(0)26-910781

	Kronback ApS Lautrupvang 15 DK-2750 Ballerup Denmark Web: www.kronback.com Fax: (+45) 46 907 910		Page 57 of 57
--	---	--	---------------